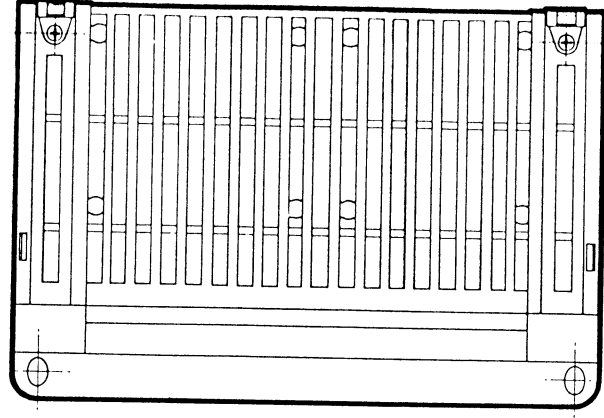
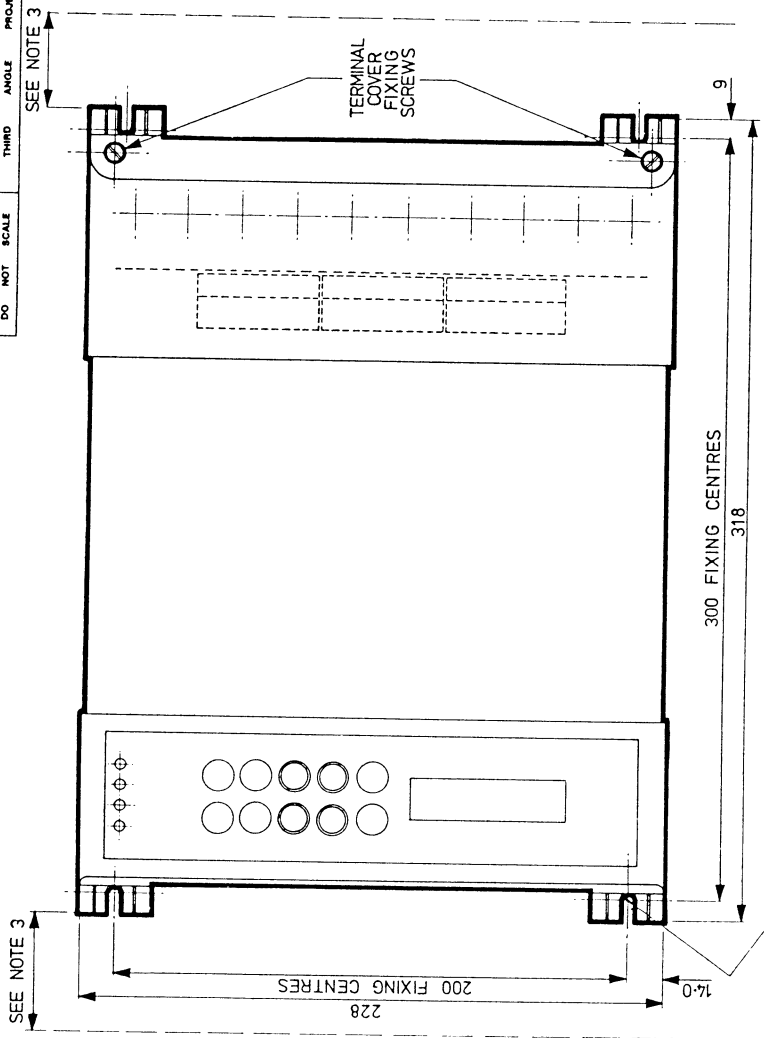
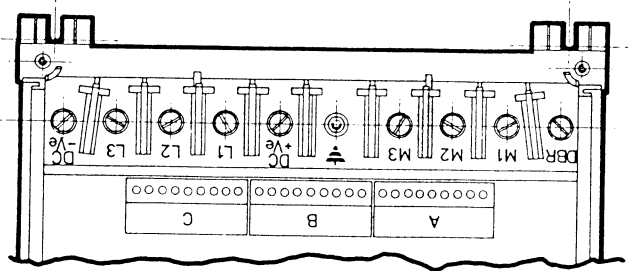
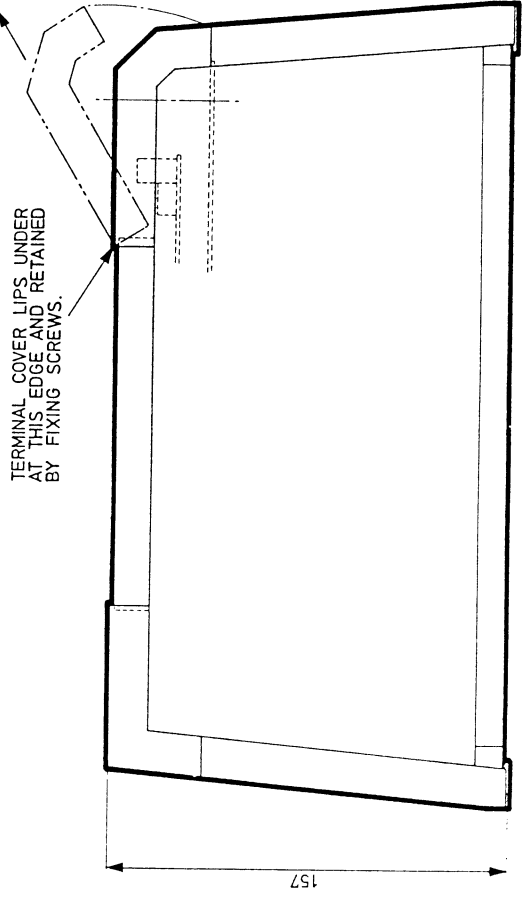


DO NOT SCALE THIRD ANGLE PROJECTION GENERAL DRAWING PRACTICE TO BS 7373



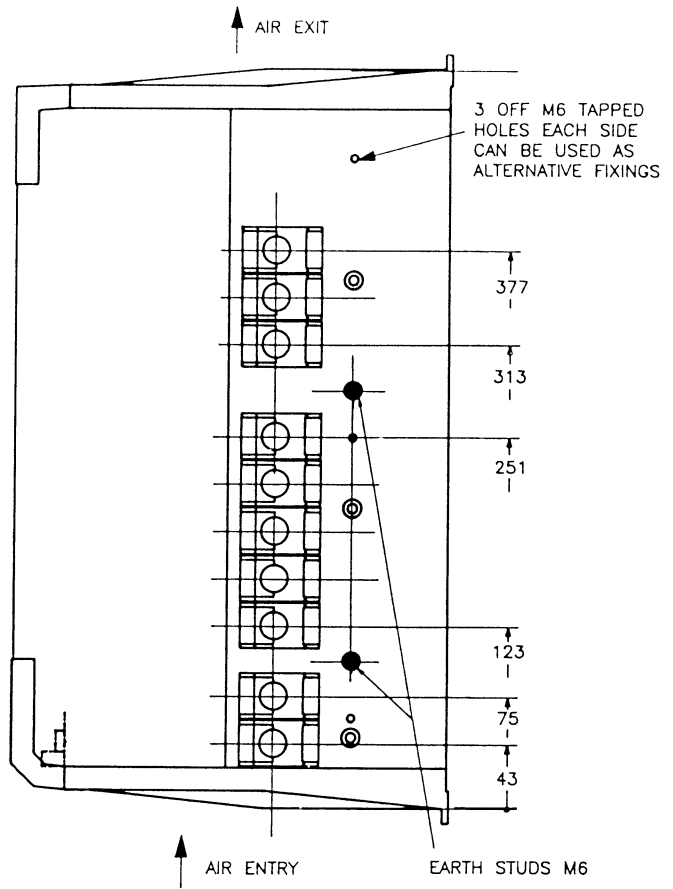
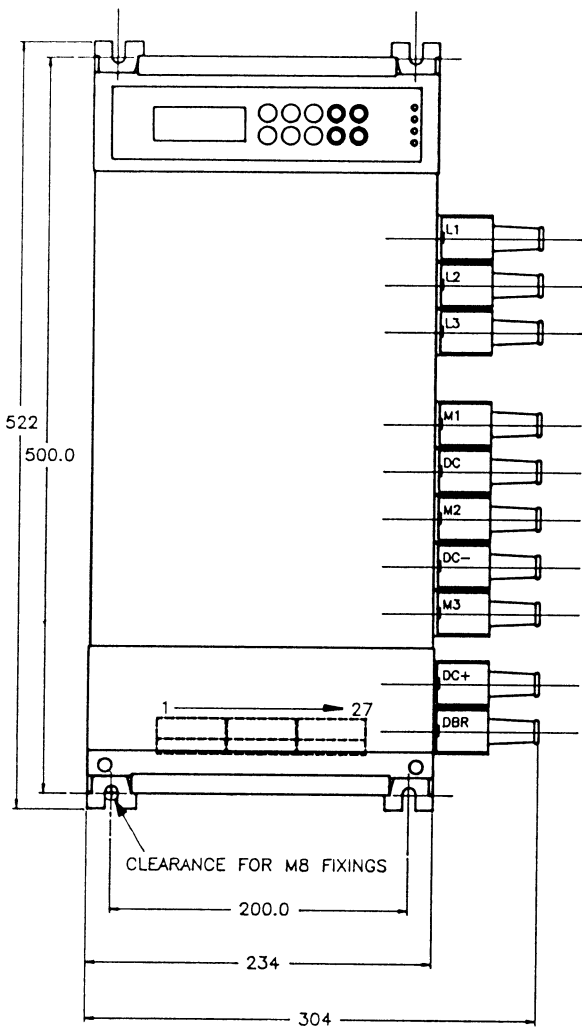
PART VIEW SHOWING
 TERMINAL LAYOUT WITH COVERS REMOVED



NOTES

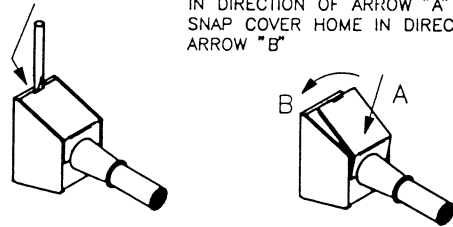
1. CONNECTIONS A, B & C ARE PLUG IN STYLE TERMINALS, CAPABLE OF ACCEPTING 1.5 mm² CABLE INTO CLAMP STYLE LOOPS.
2. EARTH CONNECTION IS M4, ALL OTHER CONNECTIONS ARE M5. ALL NECESSARY FIXINGS FOR ELECTRICAL CONNECTIONS ARE SUPPLIED. MECHANICAL FIXINGS ARE NOT SUPPLIED.
3. AT LEAST 80mm CLEARANCE ABOVE AND BELOW CONVERTER MUST BE PROVIDED FOR COOLING AIR.
4. TERMINAL COVER CAN BE REMOVED BY RELEASING RETAINING SCREWS.

DATE	BY	CHECKED	MATERIAL	SCALE	TITLE
			PLB	1:1	ESL OUTLINE DRAWING
DIMS IN MM. APPLY OVER FINISH			LITTLEHAMPTON ENGLAND TELEF. 0142		
GENERAL TOLERANCES			E1		
FINISH			SDS		
DRAWN			C. 1971, REV. 73		

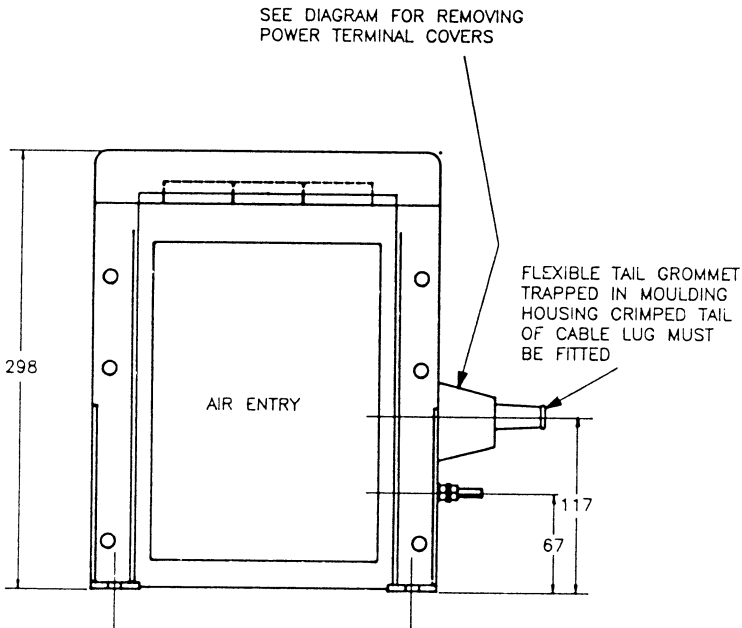


TO REMOVE POWER TERMINAL COVERS INSERT SCREWDRIVER HERE AND TWIST OR PULL AWAY FROM TERMINAL HOUSING

TO ASSEMBLE POWER TERMINAL COVERS HOOK COVER LUGS BETWEEN GROMMET AND TERMINAL HOUSING PUSHING DOWN IN DIRECTION OF ARROW "A" ROTATE AND SNAP COVER HOME IN DIRECTION OF ARROW "B"



586 TERMINAL COVER



586 OUTLINE DRAWING

- NOTE 1 CONNECTIONS TO CONTROLS TERMINALS 1 TO 27 ARE PLUG IN STYLE TERMINALS CAPABLE OF ACCEPTING 1.5mm (16 AWG) CABLE INTO CLAMP STYLE LOOPS.
 2 EARTH CONNECTIONS ARE M6 ALL OTHER CONNECTIONS ARE M8. ALL NECESSARY FIXINGS FOR ELECTRICAL CONNECTIONS ARE SUPPLIED. MECHANICAL FIXINGS ARE NOT SUPPLIED.
 3 AT LEAST 100mm CLEARANCE ABOVE AND BELOW CONTROLLER MUST BE PROVIDED FOR COOLING AIR
 4 TERMINAL COVER CAN BE REMOVED BY RELEASING RETAINING SCREWS TO GIVE ACCESS TO CONTROL TERMINALS